

# Maths Teacher

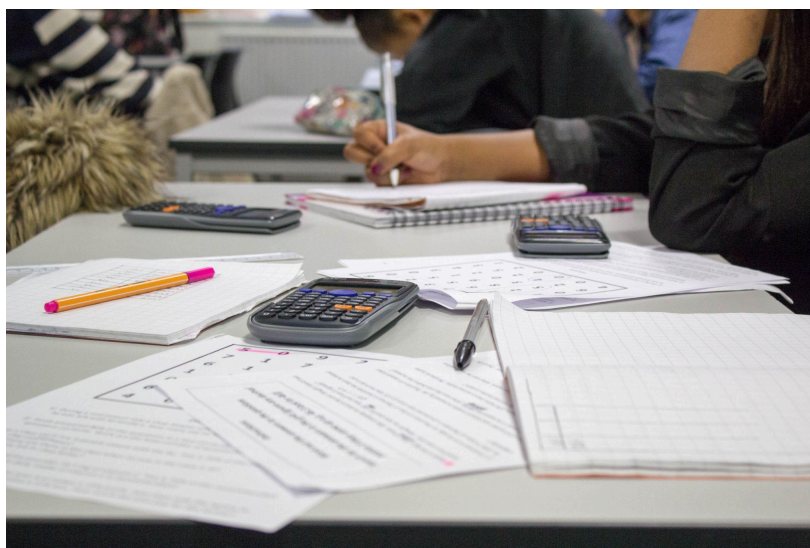
Fixed-term appointment, with the possibility of extension or permanency

Start Date: January 2026



## The BRIT School

Are you passionate about teaching Maths? Do you wish to inspire young people? Are you keen to continue to develop your career in a creative school? Would you like to work somewhere unique, where you can make a difference with our hard working and ambitious Maths team?



Our successful Maths department is looking for an enthusiastic and creative teacher of Maths to join this progressive and dynamic department to deliver GCSE and P16 Resits and Functional Skills Maths, with excellent opportunities for CPD and future opportunities.

In return we offer an opportunity to work with students with extraordinary talents and colleagues who are tirelessly committed to our values and beliefs. Together, our aim is to give students the experience, skills and confidence to fulfil their dreams and aspirations.

## Why Join The BRIT School?

The BRIT School is a unique institution offering specialist education in the arts and related technologies, alongside the full range of National Curriculum subjects. Recently judged 'Outstanding' in all five categories by Ofsted The BRIT School is sponsored by the British Record Industry and has a unique relationship with the performing and creative arts industries. We offer a supportive and inspiring environment where you can make a significant impact. You will be part of a dedicated leadership team that values collaboration, development, and student well-being.

The school runs a five-term academic year with some school holidays falling at different times to the usual Local Authority school breaks. Please see our website for further details of our term dates.

## Applicant Information Pack

### Closing date

**Thursday, 25th September 2025 (9am)**

### Interview date

**W/C 6th October 2025**

## Contents

- Job Description
- Key Responsibility
- Person Specification
- Terms & Conditions
- Staff Benefits
- About Us
- Find Us
- How to Apply

## Job Description

Job Title	Maths Teacher
Department	Maths
Salary	MPS/UPS
Hours of Work	Full Time
Contract Type	Fixed-term appointment, with the possibility of extension or permanency
Responsible to	Head of Maths
Responsible for	N/A (Excellent potential for CPD and opportunities at BRIT)
Job Overview	To undertake teaching Maths at all levels in accordance with the department's development plan and the school's mission statement.

## Key Responsibilities & Main Activities

These to include:

- To plan, prepare and deliver lessons in all topics for Maths, according to the department schemes of work.
- To monitor, assess and record work according to departmental criteria and targets.
- To make accurate and productive use of assessment, reporting to students and parents, through documentation and by attendance at consultation and open evenings.
- To guide students' academic, personal and professional development in accordance with the school's guidelines and procedures.
- To contribute to cross-curricular work and participate in relevant working parties
- To maintain an up to date awareness of the subject area, educational/industry advances, and personal and professional development.
- To attend school and departmental meetings and INSET.
- To support and promote the school and department code of practice regarding discipline, professional conduct and equality of opportunity.
- To exercise a commitment to the school's mission statement and stated ethos including the equal opportunities policy, health and safety policy and all other current school policies
- To undertake any other duties or delegated one-off tasks at the reasonable request of the Principal/SMT/Line Manager.

## Person Specification

Applicants should demonstrate in their supporting statement how their qualifications, experience, skills and training for each of the criteria below.

Criteria	Description	Essential / Desirable
Education and Training	Qualified Teacher Status	E
	Proven ability and qualifications in teaching Maths at Key Stage 4 and P16 Resit/Functional Skills	E
Experience	Successful evidence of delivering a differentiated curriculum to students with a wide range of needs	E
	Successful experience of managing an effective classroom environment to support pupil learning and positive behaviour	E
	Proven ability to use ICT in the organisation and management of their role.	E
	Evidence of responsible, effective and motivated tutoring skills	E
Knowledge & Skills and Qualities	Evidence and sound knowledge of the Key Stage 4 and P16 Resit/Functional Skills	E
	Evidence of the ability to work cooperatively with multi-disciplinary professionals.	D
	Evidence of the ability to consult and seek advice and professional support as necessary	D
	Excellent written and oral skills	D
Personal Qualities	A commitment to the Schools mission, ethos and equal opportunities policy, together with high standards of education, care and behaviour.	E
	Excellent communication and organisational skills	D
	Ability to use own initiative and work as part of a team	D
	An empathy with the use of the Arts in education	E

## Terms and Conditions

Start Date	January 2026
Contract Type	Fixed-term appointment, with the possibility of extension or permanency
Hours of Work	Full Time
Salary	MPS/UPS
Work permit	All applicants must be permitted to work in the UK and hold a relevant work permit where necessary. This is not a role in which The BRIT School sponsors a visa application.
DBS Check	The appointment will be subject to satisfactory DBS clearance at the Enhanced level (child workforce).
Probation	The post has a six months' probationary period.
Notice Period	The appointment will be subject to termination by not less than one months' notice.
Pension	Membership of the Teachers Pension Scheme is an important employee benefit providing future income for your retirement.

## Staff Benefits

Annual Season Ticket/ Travelcard Loan	The school offers an annual loan for those staff who wish to make use of the reduced annual prices.
Eye Tests & Glasses	For staff who use computer screens regularly in their role, the school will pay for their eye test and also up to £150 for new glasses if required for the purposes of seeing the computer screen.
Cycle Scheme	The School is a member of Cyclescheme <a href="http://www.cyclescheme.co.uk">www.cyclescheme.co.uk</a>
Pension	Teaching Staff are automatically enrolled in the Teaching Pension Scheme.
Counselling Service	The BRIT School offers a free in-house counselling service.
Local Discounts	Staff are entitled to a discount at the Croydon Better Leisure Centres. These are located in South Norwood, Thornton Heath, Purley, New Addington and Waddon.

## About Us

The BRIT School is the UK's first and leading free performing and creative arts school for 1,450 young people aged 14 to 19. The School – an exempt charity based in Croydon – provides a unique education for over 1,450 pupils aged between 14 and 19 in the fields of music, film, digital design, community arts, visual arts and design, production and performing arts as well as a full academic programme of GCSEs and A Levels.

It invests in the future of the UK's cultural wealth by nurturing young artistic talent from all backgrounds and teaching the skills needed by the rapidly growing creative industries.

BRIT stands for the British Record Industry Trust and funding from the BRIT Awards and BRIT Trust is invested in the professional facilities and equipment at the School.

The School opened in 1991 and over 14,000 students have been educated at The BRIT School including Adele, Amy Winehouse, Jessie J, Katie Melua, Leona Lewis, Tom Holland, RAYE, Olivia Dean, Loyle Carner, The Feeling, Rizzle Kicks, Cush Jumbo, Blake Harrison, The Kooks and Lola Young. In total, students from the School have been responsible for selling over 280+ million albums, 70+ billion streams of BRIT alumni songs between 2018-23 and winning 43 high profile awards including BRIT Awards, Grammys, BAFTAs, Oscars and Laurence Olivier Awards.

Year on year nearly 100% of students are in education, training or employment after graduating.

In November 2024 OFSTED rated the school 'Outstanding' in all five categories of measurement: Teaching and Learning, Behaviour and Attitudes, Personal Development, Leadership and Management and the Sixth Form provision.

**Our Mission** - To prepare young people for careers in the creative and performing arts.

**Our Values** - Original, Responsible, Ambitious, Inclusive, Kind

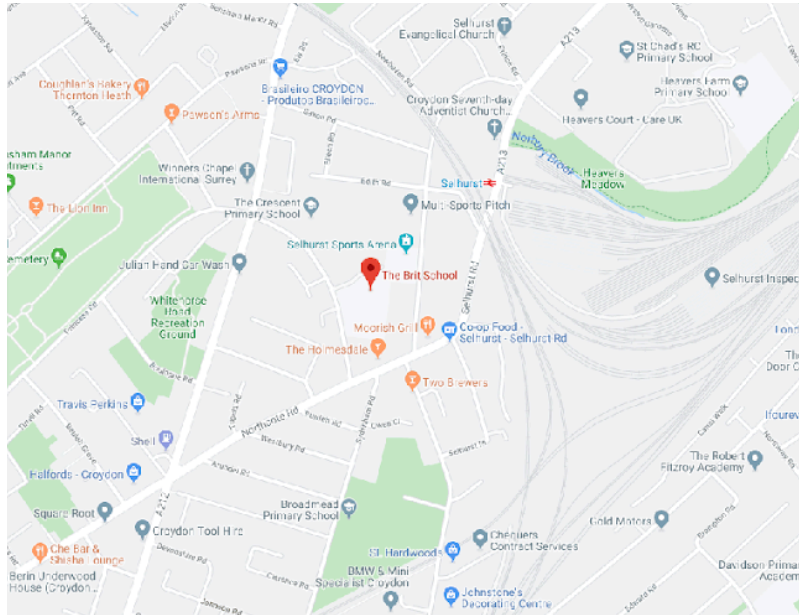
## Vision

- To train and educate young people for future careers in Performance and Creative Arts industries.
- To provide a comprehensive and exceptional KS4, Post 16 general and vocational education that prepares students for life in the arts.
- To provide a unique educational approach that has creative teaching and learning in its bloodstream and has a pastoral approach that focuses on the individual reaching their full potential.
- To celebrate the diversity of the educational needs, background, race, religion and sexuality of all within its community.
- To be a role model for other schools and organisations in its community work.

## Location

The BRIT School is located in Selhurst, Croydon.

60 The Crescent, London, Croydon CR0 2HN



## How to Apply

To apply, please complete our Application Form available [here](#).

CV's without an application form cannot be accepted.

### Closing date

**Thursday, 25th September 2025 (9am)**

### Interview date

**W/C 6th October 2025**

The interview will consist of 3 parts, a formal Interview, a role related test and a tour of the school.

Prior to taking up the post an enhanced DBS clearance will be required.

The BRIT School is an Equal Opportunities Employer and an educational non-profit making registered charity. Roll: 1400 14 – 19 year old students Britain's leading state-funded school for the performing arts.

The BRIT School is committed to Equality, Diversity and Inclusion.

For more information visit our website and follow us @TheBRITSchool